



Annual Report

April 2013 to March 2014



Detail from our exhibition of spin paintings at the Slate Gallery in Leytonstone

**Forest Recycling Project (FRP)
2c Bakers Avenue
Walthamstow
London E17 9AW**

**020 8539 3856
info@frponline.org.uk
www.frponline.org.uk**

**Charity no. 1151578
Company no. 2427258
VAT registration no. 548 9174 00
Waste carrier registration no. C8DL16054
Registered office as above**

Photos courtesy of Alan Husband, FRP volunteer photographer

1. CHAIR'S REPORT

This is FRP's 25th year of operation. I think this is an amazing milestone, and testament to the hard work of many people over the years. Our longevity and successes have been down to the collective and individual efforts of all staff and volunteers, and the current team continues this long tradition of capable and committed people. The Board of Trustees is enormously grateful to them and their efforts, particularly in such a challenging funding environment.

We continue to experiment and trial re-use services that look to solve significant environmental problems. Our current focus is on paint re-use and how we can develop a sustainable service that ensures this everyday but environmentally unfriendly material is used with minimal waste and with care for our environment. Our reclaimed paint project continues our work of demonstrating the benefits – social, environmental and economic – of effective recycling and re-use.

We hope that the funding environment can continue to support community organisations like ourselves, as we achieve high impact (as outlined in this report) at low cost. But we do still need the support of funding organisations (for which we thank our current funders) as our services often need time to develop sustainable business models.

Many thanks to all who have supported FRP this year and we look forward to working with you all on new and existing projects in 2014-15 and beyond.

Matthew McKeague
Chair

2. GENERAL MANAGER'S REPORT

FRP has been active in the local community since 1989 when two Waltham Forest residents started to collect newspapers at a time when recycling was not a mainstream council service. We still deliver a waste paper recycling service but our remit has grown considerably over the years.

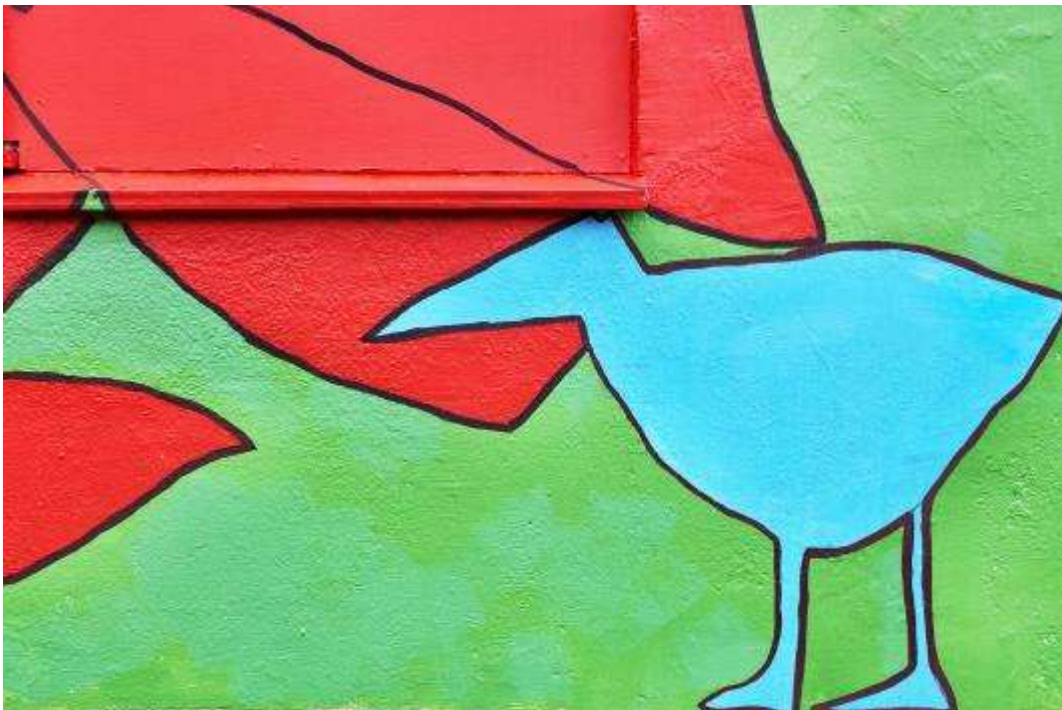
Our flagship paint re-use project has been going for a while, but this year it took centre stage. We received part loan/part grant funding from London Reuse Limited to help fund paint operations and business development. We refurbished our Walthamstow premises to house a bigger and better reclaimed paint shop, enabling us to enhance our customer service and distribute larger quantities of paint. Marketing and promotion were given a boost, enhancing our new **The Paint Place** brand. We collected about 78,000 litres (109 tonnes) of paint from participating council waste sites – the highest amount since the project began. We had our first intern who focused on communications and marketing, funded through Santander.

We increased our efforts to maximise the social impact from utilising reclaimed paint as a resource. The project is largely delivered with the help of volunteers who mainly work in the reclaimed paint shop and warehouse, and also help with office or business development tasks such as marketing and promotion. By engaging volunteers who are marginalised, the project enables them to build self-confidence, increase their well-being, develop useful skills and experience aiding their progression. The project enables those on a low budget (whether they are individuals or community organisations) to save money by offering affordable or free paint to brighten up their living or work spaces. People always tell us 'paint reclamation is a great idea!' and we are determined to spread the word and increase the uptake of reclaimed paint.

This year has been challenging financially, with grant funding harder to come by, and we had to reduce the size of our staff team – I would like to say a big thank you to all staff for their understanding, and the commitment and support shown with many extra hours put it because they care about FRP.

I would also like to thank the Chair & Board of Trustees, our affiliates, alumni, partners, customers and clients, and most of all, our dedicated team of volunteers – we would not to be able to do it without you!

Nicole Muris
General Manager



Detail from our community mural project at Hatch Lane, Chingford

3. ABOUT FRP

FRP is a social enterprise and charity, active since 1989 and based in Walthamstow, East London. We develop innovative ways to involve communities in waste minimisation and re-use activities that deliver social and environmental benefits.

Our main areas of work are collecting and re-distributing waste paint, recycling office paper, organising waste exchange events, supporting communities to develop waste minimisation initiatives, and a volunteer programme enabling marginalised people to gain valuable skills and work experience through volunteering, reduce social isolation, and take positive action for their community.

Our main beneficiaries are:

- Volunteers – particularly people experiencing long-term unemployment and mental ill health or young adults requiring work experience
- People accessing low cost or free goods – particularly those on low income in areas of high deprivation
- Charities, community groups and not-for-profits on a low budget accessing low cost or free goods
- Organisations working in partnership with FRP to deliver community activities around low cost sustainable living.

4. KEY ACTIVITIES

The Paint Place

More than 330 million litres of paint (retail and trade) are sold in the UK each year, of which an estimated 50 million litres are unused, stored in homes or garages or just thrown away. This is the equivalent of 20 Olympic-sized swimming pools. We see 'waste paint' as a resource (as long as it is re-usable) and an environmental problem that can be turned into a social solution.

The Paint Place is FRP's flagship re-use project. This is how it works:

- FRP enables residents (across 8 London boroughs at present) to 'recycle'/donate any unwanted, leftover paint via participating Re-use & Recycling Centres. FRP also accepts a small proportion of paint from commercial companies by prior arrangement
- FRP collects this paint on a regular basis. At FRP's warehouse, a team of staff and volunteers then sort, quality-check and re-mix the paint, making it ready for re-distribution
- The paint is distributed/sold as a sustainable, low-cost alternative to new paint via FRP's paint shop in Walthamstow, its paint warehouse in Leytonstone and several stockists across London. Reclaimed paint costs considerably less than new paint, with a general saving of £5 per litre. Paint is available in all types, colours and sizes. Anyone can access the paint

- FRP works with not-for-profits, charities, community groups and housing associations, offering paint schemes that enable beneficiaries to access free or discounted paint.

Volunteering

FRP has received funding from City Bridge Trust to develop its volunteer programme. Building on our experience over many years of working with volunteers, the Environmental Action Through Volunteering Project is developing new and innovative approaches to maximise the benefits of volunteer placements and improve the overall volunteering experience. Volunteers access skills and activities based learning, capture their own learning and skills development, and are active in their local community to improve the environment and reduce carbon emissions. FRP is immensely grateful to all its volunteers for their time, commitment, work and enthusiasm.



Some of our staff and volunteers at FRP's reclaimed paint shop

Community Engagement

FRP delivers community engagement work across North East London (our main area of operation), in some of the UK's most deprived areas. This work consists of the following key strands:

- Give or Take events: delivering community-based waste exchange events on behalf of councils, housing associations, community groups and other partners. These money free events enable people to give away re-usable things they don't need or take things they do
- Community development: engaging with people on housing estates and community groups, working alongside them to identify and deliver innovative and practical ways to come together to reduce people's living costs as well as their impact on the environment

- Community murals: coordinating mural projects – including consultation, design and painting – working with local communities and artists. The murals are painted with reclaimed paint from FRP.

Green Office

FRP collects office paper for recycling from small businesses and not-for-profit organisations within the London Borough of Waltham Forest and adjoining areas. Both a normal and confidential waste paper collection service is provided. We also collect small amounts of cardboard, and sell 100% recycled, A4 white paper for everyday office use.

5. IMPACT

Social

In 2013-14, a total of 104 volunteers joined in with our activities. Through our volunteer programme, we help build people's confidence, reduce social exclusion, develop their skills & experience, enable them to make a positive contribution to their community and local environment, and assist their progression.

Case study

We recruited a team of three unemployed volunteers to deliver our Paint 4 Hackney project, supported by staff. Of the three, one has progressed into employment, another has embarked on setting up a social enterprise in Hackney, and the third took up a paid internship role within FRP which then led to an interim business development manager role.

We distributed about 48,000 litres of reclaimed paint to 160 community organisations and more than 2,600 individuals. Through our paint re-use project, we:

- Provide people (in particular those on low-income) with affordable or free paint to enable them to improve their homes
- Provide community organisations (with budget constraints) with affordable or free paint to improve the spaces where they work or deliver their services.

Through partnerships with housing associations, we distributed 10,000 litres of paint to 300 low-income households, helping tenants to brighten up their home as well as enabling them to comply with tenancy obligations by keeping their property in a good decorative state.

Our annual paint membership scheme for charities, community groups and not-for profits included 51 members on 31 March 2014, entitling them to significant cost savings.

Case study

FRP The Paint Place supplied 100 litres of bright blue gloss and eggshell paint to The Community Pool in Waltham Forest for decorating the poolside area and changing rooms. By joining the annual membership scheme, they were able to save over £1,000 on the cost of paint.

“The Paint Place made it possible for us to paint a huge space, making it much brighter and welcoming. Without the scheme, the cost would have been prohibitive.”

Karen Hayes, Director, The Community Pool (Community Interest Company)



A colourful selection of our reclaimed paint

FRP coordinated 11 Give or Take events in partnership with 7 clients across 3 London boroughs. About 1,400 people attended (average of about 125 per event). Events are open to the general public, and are a great chance for people to get together, have fun, share knowledge, and get rid of unwanted goods and save money. They promote re-use, and encourage community exchange and environmental consideration. The events help reduce waste, provide free access to household goods to people on low income, and raise awareness about positive steps that individuals and communities can take, to individually and collectively help mitigate climate change.

FRP undertook community development work on 4 housing estates: Priory Court and Friday Hill in Waltham Forest, and Tiptree and Orchard in Redbridge. We engaged and empowered residents to develop innovative ways to share skills, goods and time as a means to save money, reduce waste and strengthen communities. Activities included: running give or take days, a swishing (clothes swap) event, healthy cooking workshops, setting up a honesty

library and toy library, delivering composting workshop and furniture upcycling workshops, and brightening up an outdoors sports court using reclaimed paint. All activities were designed as to have a legacy factor beyond the project work, with an emphasis on sharing knowledge and skills with people involved, equipping them to continue or initiate activities. We made extensive use of reclaimed/re-use materials, thereby reducing landfill and carbon emissions. This work directly benefitted around 600 people, demonstrating to them how re-use can save you money as well as create environmental benefits, thereby promoting re-use. FRP developed effective and positive working relationships with the local Tenant & Resident Associations, social housing providers and partner agencies/community groups we worked with, resulting in further engagement and activity.

FRP delivered a handful of mural projects included one at The Asian Centre Waltham Forest, funded by Community First.

Case study

FRP in conjunction with local artists Alice Cunningham and Frances Copeman completed a nature scene design for the inter-generational garden space at the back of The Asian Centre. The community centre's young people, with support from staff and volunteers gave the artists their ideas of what they would like to see painted and what the space means to them. The mural was painted using reclaimed paint supplied by FRP and with the help of The Asian Centre beneficiaries.

"I went to the centre earlier on and saw the mural in person. I felt like I had walked into a very different place ... amazing how much change some colour and patterns can bring, to really brighten up a place. We are pleased with the results. It looks so refreshing and in tune with nature. You have done a great job. Thank you very much for incorporating all the ideas."

Monwara Ali, Manager, The Asian Centre Waltham Forest

Environmental

FRP managed to save a total of 132,000 kg (**132** tonnes) of re-usable goods and materials from going to landfill across all activities, the equivalent of at least **216** tonnes of CO2 saved, also preventing the use of raw materials and energy to manufacture new products. This is what it looks like, broken down by activity:

- The Paint Place collected about 78,000 litres of paint (109 tonnes) from 10 Re-use & Recycling Centres and several commercial companies. A total of about 48,000 litres were re-distributed, translating into 67 tonnes of paint saved from going to waste that year. We also recycled 5 tonnes of metal paint tins.
- FRP provided a Green Office paper recycling service to 55 local businesses, public sector organisations and community groups, collecting a total of 41 tonnes of paper.
- An estimated 12 tonnes of furniture, goods and bric-a-brac were re-used via our Give or Take events (average of about 1 tonne per event).
- We re-distributed 7 tonnes of reclaimed scaffolding boards.

Economic

Volunteers plus people with Community Payback Orders gave a total of 10,051 hours of their time – the equivalent of 5 full time staff. Additional time was offered by our volunteer trustees. Assuming a London Living Wage of £8.80, these hours translate into a monetary value of about £88k.

Our paint re-use project and waste exchange events enabled people to save money through providing access to low-cost or free goods. Assuming a saving of £5 per litre compared to buying new paint, The Paint Place saved the community about £240k.

An estimated £33k of landfill disposal cost was avoided based on a conservative estimated cost of £500 per tonne to dispose of paint if treated as hazardous/special waste.

6. HIGHLIGHTS

FRP obtained charitable status in April 2013. A review of FRP's projects and governance drew attention to the charitable nature of FRP's activities and the scope for registration with the Charity Commission and resultant benefits to the organisation. Charitable status also creates a more accurate public perception of the nature of FRP's work and ethos.

FRP participated in a CSV funded project called Measuring the Good, resulting in revised strategic aims & objectives and an increased focus on impact measurement.

City Bridge Trust awarded us a £81.4k grant over 2 years to enhance our volunteer programme.



Detail from our community mural project at Hatch Lane, Chingford

As part of our Paint 4 Hackney project funded by Comic Relief and The London Community Foundation, we successfully distributed 10,000 litres of paint for free to over a 100 community groups active in Hackney.

FRP held an exhibition of spin paintings at the Slate Gallery in Leytonstone to highlight the benefits of re-using paint. The spin paintings were made by our creative team of volunteers using reclaimed paint and a bicycle-powered spinner.

We were able to offer a 3-month paid internship through the Santander Social Enterprise Development Award (SEDA) to develop our marketing capability.

There was an increase in demand for reclaimed scaffolding boards, preventing these from going to landfill.

7. FINANCE REPORT

Summary statement of our financial activities:

	2013-14 Unrestricted Funds (£)	2013-14 Restricted Funds (£)	2013-14 Total Funds (£)	2012-13 Last Year Total Funds (£)
INCOME				
Voluntary income	21,381 (1)	75,359 (2)	96,740	125,908
Activities for generating funds	82,739	-	82,739	90,238
Investment income	46	-	46	39
Other	-	-	-	7,850
<u>Total incoming resources</u>	104,166 (3)	75,359 (4)	179,525	224,035
EXPENDITURE				
Cost of activities	107,000	81,282	188,282	230,455
Governance costs	1,050	-	1,050	1,767
<u>Total resources expended</u>	108,050	81,282	189,332	232,222
SURPLUS/(DEFICIT) for the year	(3,884)	(5,923)	(9,807)	(8,187)

Notes:

(1) Donations

(2) Grants

(3) 58% of our income is self-generated (compared to 55% in 2012-13)

(4) 42% of our income is through grants (compared to 45% in 2012-13).

8. THANK YOU

FRP thanks the following funders for their support in 2013-14:

- Arcola Theatre
- Big Local Hackney Wick
- Big Lottery Fund: Awards for All & Local Food
- City Bridge Trust
- Comic Relief & The London Community Foundation: Evening Standard Dispossessed Fund
- Community First
- Community RePaint
- CVS: Legacy Fund
- Groundwork
- London Borough of Hackney
- London Borough of Redbridge
- London Borough of Waltham Forest
- London Cycling Campaign
- London Re-use Limited (LRL)
- Mind: Ecominds
- Santander & The London Community Foundation: Social Enterprise Development Award

We would also like to thank:

- Council officers and councillors in the London Boroughs we work with, particularly Waltham Forest, for their encouragement and support
- Organisations who use and promote our services
- Community and environmental partners, in particular Hornbeam, OrganicLea and HEET
- GREEN (Growing Resilient Energy Efficient Neighbourhoods), a local cooperative society with FRP as one of its partners. In 2012, GREEN installed 10 solar photo voltaic panels on our roof at 2c Bakers Avenue in Walthamstow to generate electricity
- Local residents and workers who support the work we do by getting involved and taking action to reduce their waste
- The Board of Trustees, staff, affiliates and volunteers:

Board of Trustees:

Ben Lumley
Janet Bowstead
Julia Lopez-Real
Matthew McKeague (Chair)
Michele Haffern
Robin Dallas-Childs
Steve Lambert
Sue Murray-Johnson
Zubaria Lone (resigned April 2013)

Staff:

Adam Paul
Alice Cunningham
Alison Rudd
Brian Kelly
Eoin O’Cearnaigh
Leslie Nicholas
Nicole Muris
Poppy Flint
Roger Skipper
Tina Kirby

Affiliates:

Antoaneta Roussinova (intern)
Carla Rossiter (community engagement)
Gemma Seddon (Give or Take events)